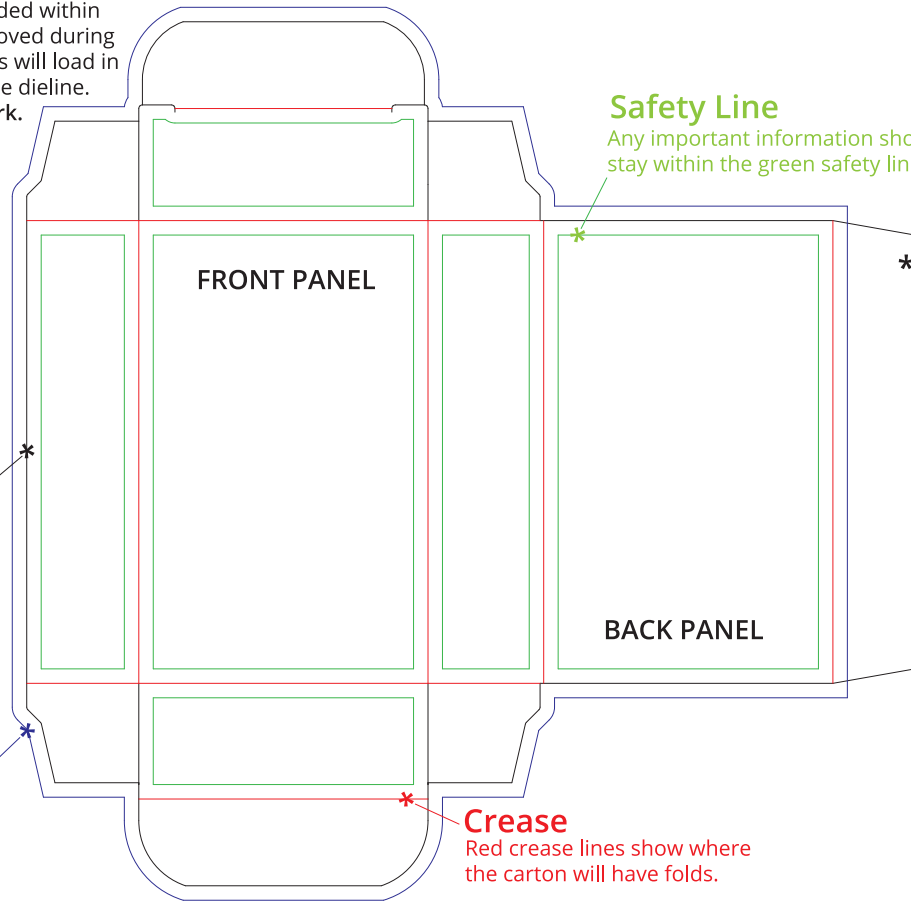


Anatomy of a dieline

Technical Inks

The colors that make up the dieline are called technical inks. They are encoded within our proprietary software to be removed during the production workflow. These inks will load in the swatch palette upon opening the dieline. Do not use technical inks in artwork.



Cut
 The black cut line indicates where the carton will be trimmed.


Outer Bleed
 Designing with a 1/8" bleed is recommended for all artwork.

Safety Line
 Any important information should stay within the green safety lines.


*** Glue Flap**
 The quickest way to tell where your design should be is to look for the glue flap. It is located right next to the back panel.

Crease
 Red crease lines show where the carton will have folds.


Preparing a Print Ready File | Submitting Ready Artwork




Outline Fonts
 Ensure that there are no issues or errors with live font by outlining text. Minimum thickness for fonts and graphics should be no less than 0.25 pt.



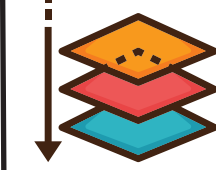
Color Mode
 Document must be set up as CMYK for print. Pantone spot colors should be called out as noted in color book for conversion.




Embed all Links
 Artwork must be embedded into art file to prevent broken links.




Resolution
 Images should be at least 300 ppi at 100% scale for high quality printing.



File Type
 Add your artwork to a separate layer than the dieline and submit as a layered vector PDF. Remove any unused layers.



Submission
 Email completed artwork to customerservice@foldedcolor.com. Include your order number in the subject line. Files exceeding 10mb can be sent via <https://wettransfer.com/>.



Final Approval
 You will be provided a 3d proof for final approval of your artwork prior to production. Proofs are usually generated within 1-2 business days. Please follow up with customerservice@foldedcolor.com if you have not recieved your proof within that time.